

## RTA – Sydney M4

---

### Year: July 1999 to June 2000

Contract commenced for the provision of vegetation management to a section of the M4 motorway plus adjacent firebreaks, measuring approx 21 kilometres.

Three monitoring sites were established to capture information on the type and percentage of Desirable (Low growing species) and Undesirable (Tall growing species) of weeds and grasses. An initial assessment of the areas showed high levels of undesirable weeds. The monitoring sites are also positioned on the map.

The management of the vegetation incorporated a mix of mowing and Weedbug treatments (height selective – weed treatments) scheduled to maintain the area within the contract specifications but also to produce a conversion from tall growing to lower growing grasses and weeds.

The program in the initial year included (2) two Weedbug treatments and (4) four mows.

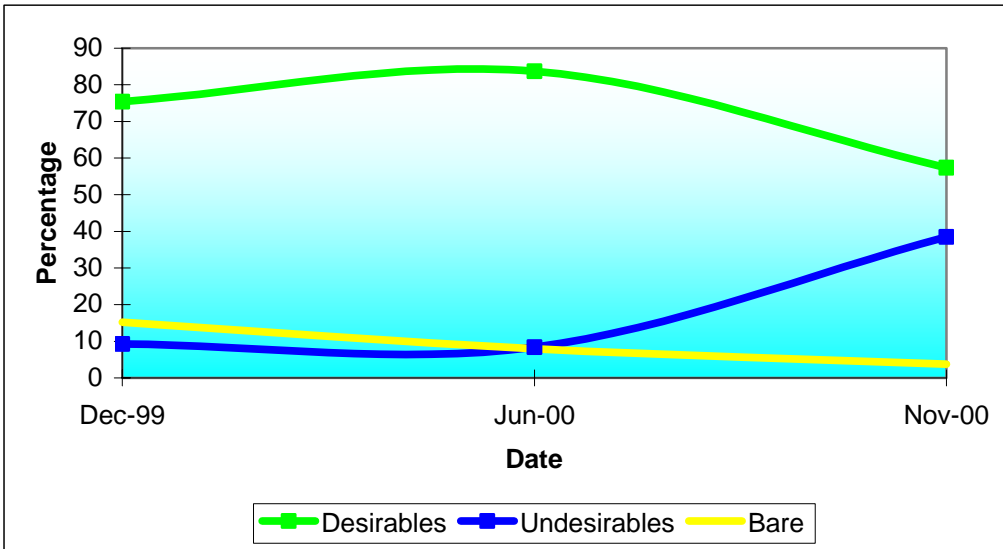
---

### Year: July 2000 to June 2001

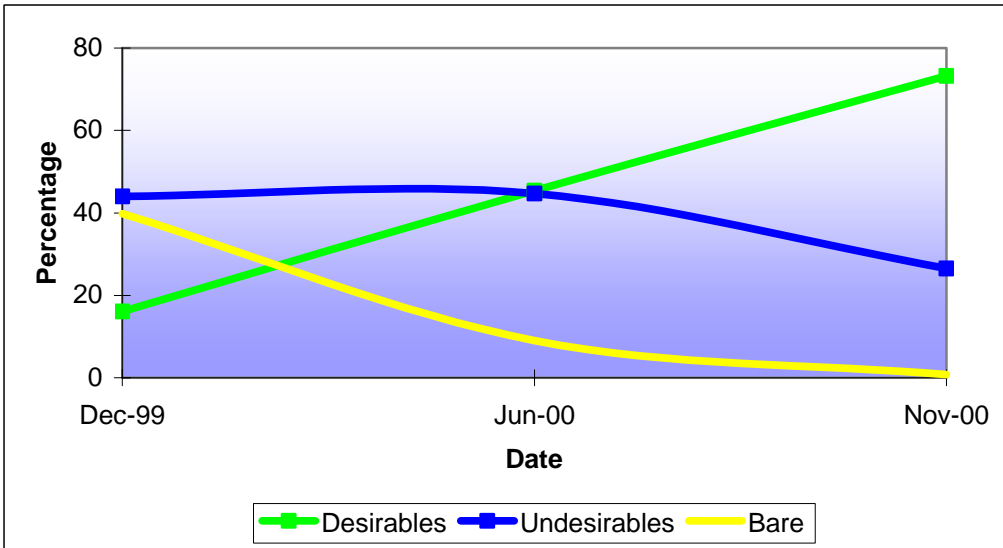
The program in the second year included (2) two Weedbug treatments and (4) four mows. The program was varied to compensate for the Sydney Olympic games, as the area could not be worked for a period of time before and after the Games.

The monitoring sites were regularly sampled and the following graphs and comments show the change in desirable / undesirables which has occurred over the two years of the contract.

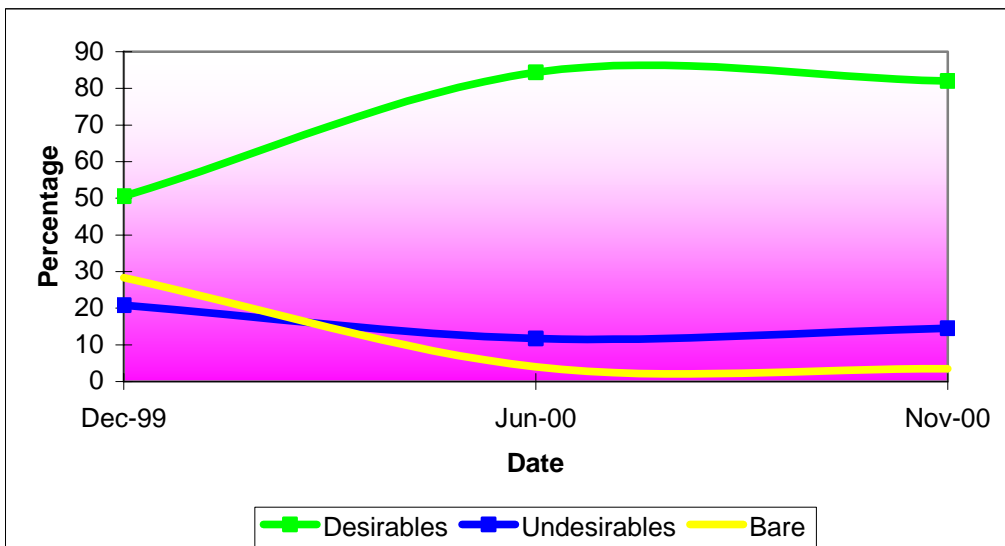
Site 152\_1 M4 Firebreaks



Site 152\_2 M4 Westbound Verge



Site 152\_3 M4 Westbound Verge



## **Results**

Overall the results have been pleasing. The re-growth in tall species from last year has been significantly reduced with a thinning of the volume of vegetation evident. Couch grass is well established along the road and this is handling the seasons well.

The firebreaks are converting well with undesirable species continuing to be kept under control with a reduction in volume occurring.

In the majority of the graphs, the desirable species (signified by the green line) are gaining strength and the undesirable species (signified by the blue line) are declining.